

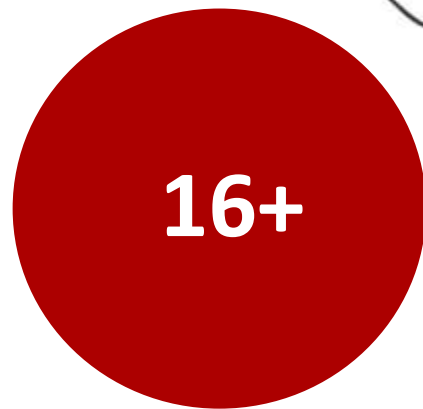


# Shellcraft

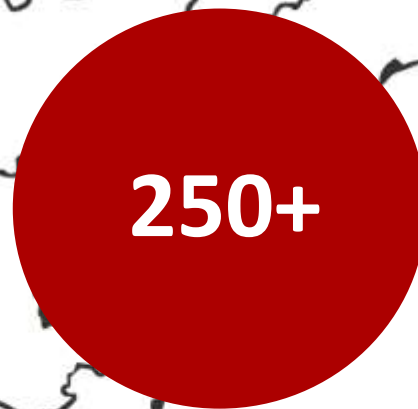
Imagine it, create it!

# Shellcraft

## The journey so far...



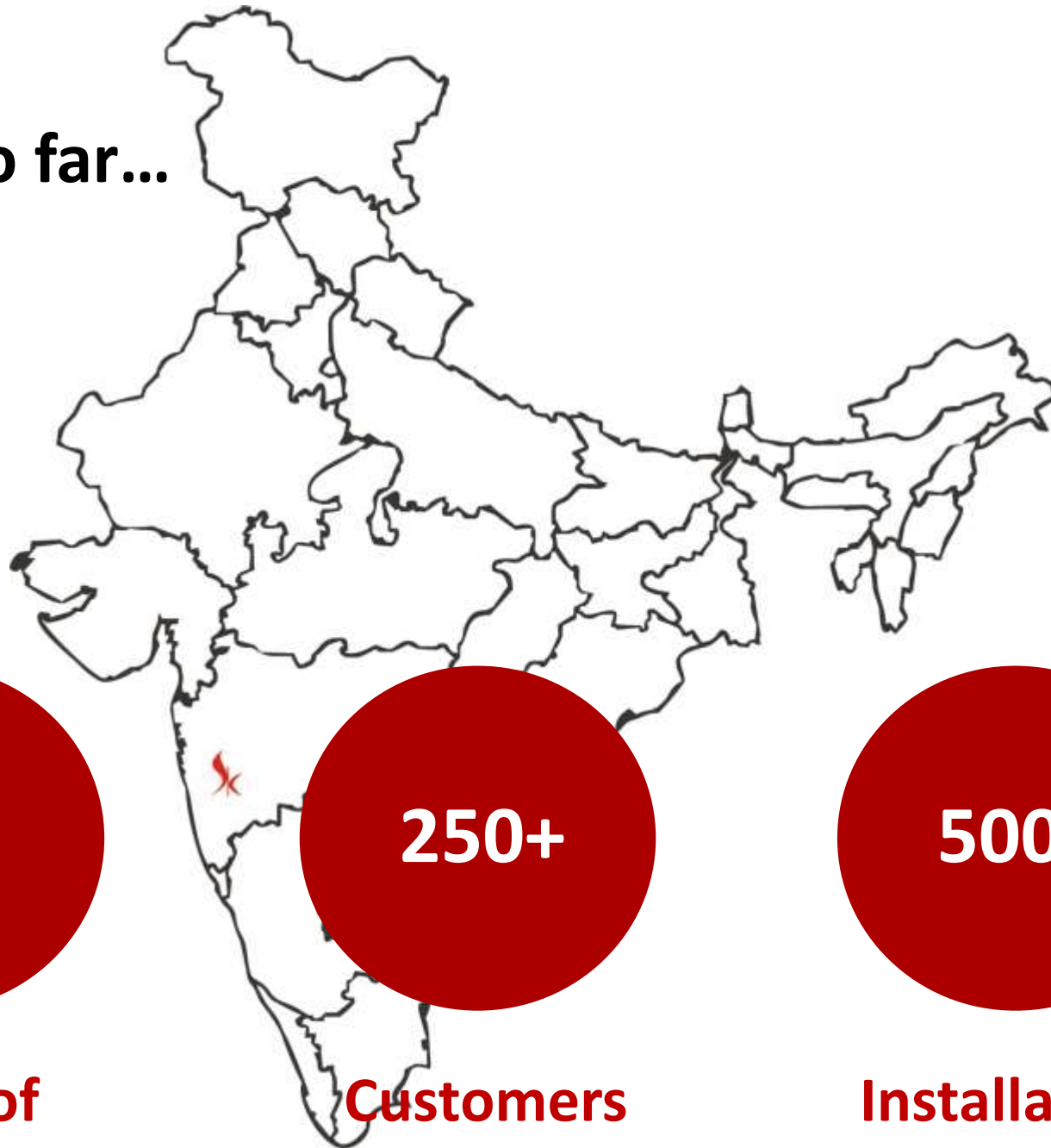
**Years of  
experience**



**Customers  
across India**



**Installations  
across industries**



# Imagine it, create it!

Shellcraft is beautiful, durable & flexible **Solid Surface material** with an option of **300 colors** to choose from.

Shellcraft can be fabricated and installed in almost any application **with invisible seams**, making this product truly 'solid' in surfacing material which gives **long lasting, highly polished and luxurious surfaces.**



# The Setup



**More than 8,000 sq.ft. of industrial shed in Pune**



# The Setup

## List of Machines Available:

- Solid Surface casting and curing set up
- Inward/outward quality check up facility
- All carpentry machine tools including Panel Saw & CNC Router
- Solid surface fabrication tools like Sanders, Buffing Machines and Routers
- Required power back up - Diesel generator set & UPS battery back up for tools
- Machinery for packaging
- All required safety equipment



**Production capacity of more than 5,000 sq.ft./month**

# The Team

Under the leadership of a team with an **experience of more than 100+ years**, Shellcraft is poised to venture into focused verticals and newer geographical areas.

❑ **Mrs. Medha Mungee:**

Medha is a Founder Director and she looks after administration of the company.

❑ **Mr. Rajesh Mungee:**

Rajesh is a Founder Director and he looks after new product development and marketing functions.

❑ **Mr. Amit Sawai:**

Amit looks after the manufacturing and finance functions.

❑ **Mr. Pradeep Beri:**

Pradeep looks after the business strategy & corporate communications functions.



# Applications: Table tops

*You imagine & we can create it*

## •Coffee Shop Table Tops



# Applications: Table tops

*You imagine & we can create it*

## •Coffee Shop Table Tops





# Applications: Table tops

*You imagine & we can create it*

## •Coffee Shop Table Tops



# Applications: Table tops

*You imagine & we can create it*

## •Center Table Tops





# Applications: Table tops

*You imagine & we can create it*

## •Center Table Tops





# Applications: Table tops

*You imagine & we can create it*

- Restaurant Table Tops



# Applications: Table tops

*You imagine & we can create it*

- Restaurant Table Tops





# Applications: Table tops

*You imagine & we can create it*

- Cafeteria  
Table Tops





# Applications: Table tops

- Dining Table Tops

*You imagine & we can create it*



# Applications: Table tops

*You imagine & we can create it*

## •Bar Table Tops





# Applications: Designer Trashcans

*You imagine & we can create it*





# Applications: Residential

- Bathroom vanity
- Bathroom vanity and sink combo



# Applications: Residential

- Kitchen Island Top
- Serving Counter
- Translucent objects
- Wall Cladding
- Shower Cubical
- Mirror Frames
- Washroom Partition
- Kitchen Counter Top
- Bathroom Ceiling/Wall Cladding





# Kitchen Shutters





## Railings Cladding:

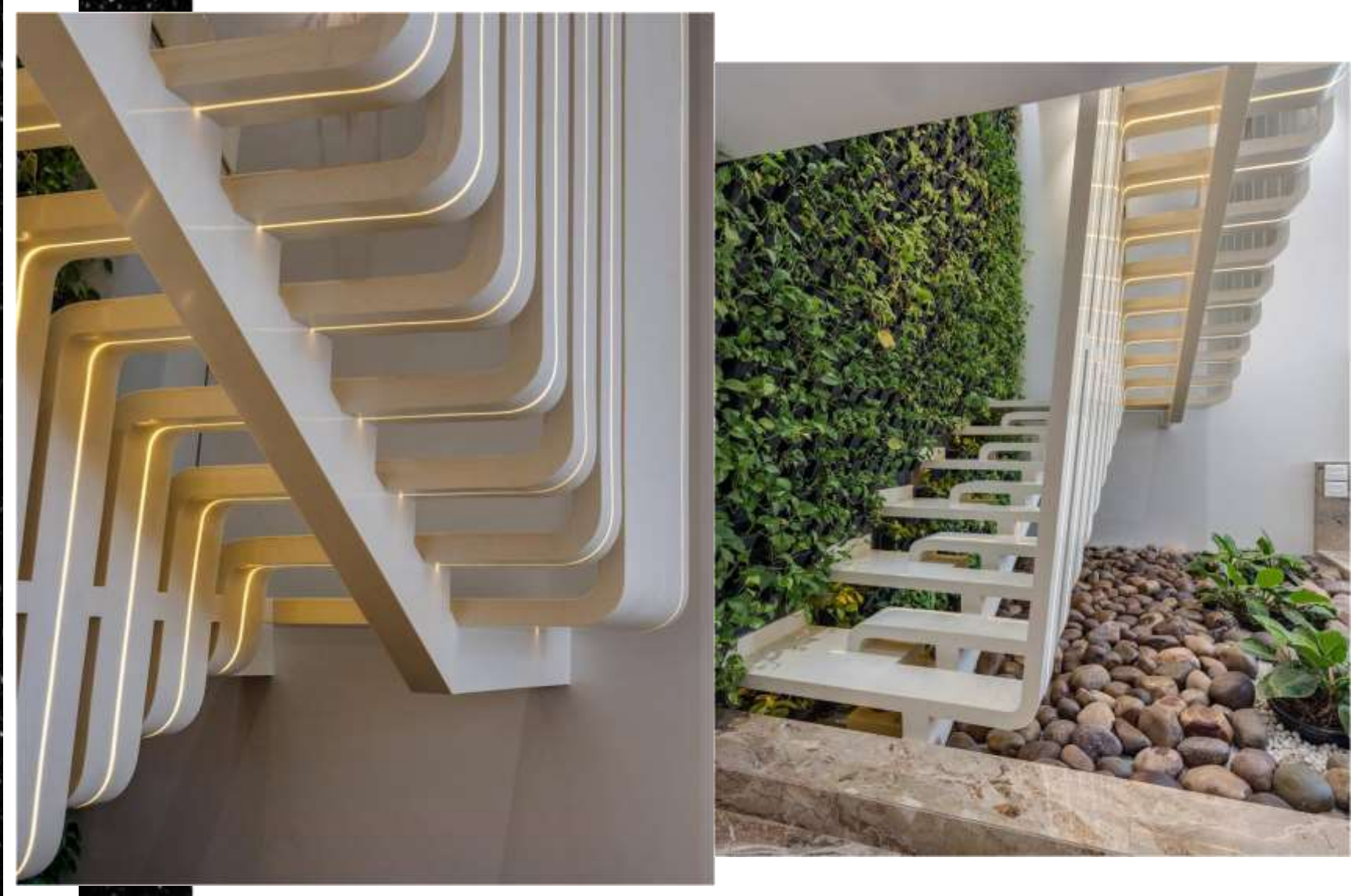
Advantages- Easy to maintain, easy to clean, colors to match the lobby theme, nice look & feel, long lasting



**This Site – A redevelopment project,  
Erandawane, Pune**

## **Railings Decoration:**

Advantages- Easy to maintain, easy to clean, colors to match the interior theme, nice look & feel, long lasting



**This Site – A private bungalow, Nashik**



# Decorative Facades

Advantages- Attractive patterns & colors, easy to maintain, long lasting

**These Sites –(above) Clubhouse facade,  
Spine Road, Chikhahli, Pune**

**(below) A redevelopment project,  
Nr. Law College Road, Pune**

## Applications: Exteriors

- Decorative Facades
- Lobby Entrance
- Showroom Fit-outs



**This Site – Lobby décor,  
Palm Beach Road, Vashi, Navi Mumbai**



**Applications: Commercial/ Hospitality**

- Lobby Décor (High scratch resistant vertical cladding)
- Murals and Installations





**This Site – IT Company office,  
Hinjewadi, Pune**

**Applications: Commercial/ Hospitality**

- Lobby Décor
- Cafeteria



**This Site – Sulzer, Pune**

**Applications: Commercial/ Hospitality**

- **Reception Table**



# Shellcraft Solid Surface- Attributes:

**Extremely Durable,  
Wear Resistant &  
Easy to Maintain,  
Aesthetically Appealing &  
Easy to Care For,  
Highly Practical,  
Resistant to Stains &  
Moisture,  
Hygienic &  
Germ-Free,  
Seamless & Malleable,  
Weather Proof & Versatile,  
Can Be Carved,  
Routed, Thermoformed into  
Moldings &  
Even to be Back Lighted,  
etc. etc. etc.**

**All Inclusive** 

# Some of Our Customers:

## Hotels and Restaurants:

Dominos  
Baskin Robbins  
Hilton- Pawana, Pune  
Grand Hyatt  
Anna Idli Restaurant  
Naturals Ice creams  
Absolute Vodka  
Deccan Gymkhana Club  
Poona Bakery  
Hotel Samudra  
Bamboo House  
Malgudi Tiffins  
Maratha Samrat

## Institutes:

HDFC School  
IISER – Pune & Tirupati

## Some Prestigious Sites:

Bangalore Air Port  
Raipur Air Port

## Corporate:

L&T Infotech, Sulzer  
Kirloskar's, Reynolds  
Talwalkar's Gym  
E-Square  
Cipla, Goa  
Deltin, Goa  
GTDC  
Maruti NEXA Showrooms

## Builders & Developers:

Paranjape Schemes  
Pandit-Javdekar  
Swojas Developers

## Furniture Manufacturers:

Ekbote Furniture  
Kitchen Décor



# Thank you!



## Shellcraft

Manufacturing unit:

**Rococo Surface Technologies Pvt. Ltd.**

S. No. 20/27/4, Nande-Mhalunge Road,  
Nande, Pune - 412115

**Shellcraft Experience Center**

Jaydeep Bungalow,  
Prathamesh Park, S.No.150/7,  
Baner, Pune- 411 045

[www.shellcraft.in](http://www.shellcraft.in) | [hello@shellcraft.in](mailto:hello@shellcraft.in) | Contact: +91 82370 93405